

SPEC SHEET + MEASUREMENTS

SPORT-TEK

Sport-Tek® Hooded Soft Shell Jacket. ST980

Product photo



With sporty raglan sleeves and great water- and wind-resistance, this soft shell is made for you—regardless of the weather.

- 100% polyester knit shell with a durable water-repellent (DWR) coating bonded to a water-resistant film insert and a 100% polyester brushed tricot interior
- 5000MM fabric waterproof rating
- 5000G/M² fabric breathability rating
- Three-panel hood with drawcord and toggles
- Set-in sleeves
- Coated reverse coil center front zipper
- Front reverse coil zippered pockets
- Elastic binding at cuffs
- Open hem

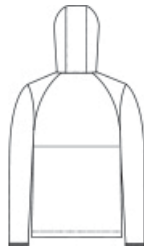
CARE INSTRUCTIONS

Machine Wash Cold With Like Colors. Do Not Bleach. Do Not Use Fabric Softener. Tumble Dry Low. Do Not Iron.

Sketches



front



back

SPEC SHEET + MEASUREMENTS



Sport-Tek® Hooded Soft Shell Jacket. ST980

PRODUCT MEASUREMENTS

| | XS | S | M | L | XL | 2XL | 3XL | 4XL |
|--------------------------------|--------|--------|--------|----|--------|--------|--------|-----|
| Body Length at Back | 27 | 28 | 29 | 30 | 31 | 32 | 32 1/2 | 33 |
| Chest | 19 1/2 | 21 | 22 1/2 | 24 | 25 1/2 | 27 | 29 | 31 |
| Sleeve Length from Center Back | 34 3/4 | 35 1/2 | 36 1/4 | 37 | 37 3/4 | 38 1/2 | 39 1/4 | 40 |

Body Length at Back: Measured from high point shoulder to finished hem at back.

Chest: Measured across the chest one inch below armhole when laid flat.

Sleeve Length from Center Back: Measure from Center Back neck to shoulder point to sleeve hem.

SIZE CHARTS

| | XS | S | M | L | XL | 2XL | 3XL | 4XL |
|-------|-------|-------|-------|-------|-------|-------|-------|-------|
| Chest | 32-34 | 35-37 | 38-40 | 41-43 | 44-46 | 47-49 | 50-53 | 54-57 |

SPEC SHEET + MEASUREMENTS



Sport-Tek® Hooded Soft Shell Jacket. ST980

HOW TO MEASURE



CHEST

Measure under the arm and around the fullest part of the chest with arms down, keeping tape horizontal.

COLORS



Deep Black
PMS BLACK
C



Graphite
PMS 432C



True Navy
PMS 533C