

# SPEC SHEET + MEASUREMENTS

PORT AUTHORITY.

## Port Authority® Women's Sweater Fleece Vest. L236

### Product photo



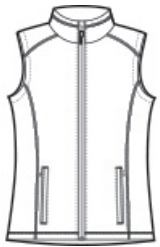
The comfort of a sweater joins the unbeatable warmth of fleece in these modern styles. Contrast binding at the pockets heightens the visual appeal.

- 8.8-ounce, 100% polyester sweater fleece
- Twill-taped neck
- Reverse coil zipper
- Chin guard
- Full-length interior storm flap
- Front reverse coil zippered pockets with binding trim
- Knotted zipper pulls

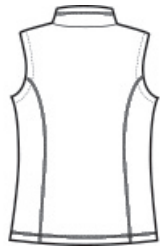
### CARE INSTRUCTIONS

Machine was cold. Gentle cycle with like colors. Non chlorine bleach when needed. Tumble dry low. Remove promptly. Do not iron.

### Sketches



front



back

# SPEC SHEET + MEASUREMENTS

PORT AUTHORITY

Port Authority® Women's Sweater Fleece Vest. L236

## PRODUCT MEASUREMENTS

	XS	S	M	L	XL	XXL	3XL	4XL
Body Length at Back	26	26 1/2	27	27 1/2	28	28 1/2	29	29 1/2
Bust	17 1/4	18 1/4	19 1/4	20 3/4	22 1/4	23 3/4	25 3/4	27 3/4

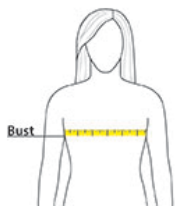
**Body Length at Back:** Measured from high point shoulder to finished hem at back.

**Bust:** Measured across the chest one inch below armhole when laid flat.

## SIZE CHARTS

	XS	S	M	L	XL	XXL	3XL	4XL
Bust	32-34	35-36	37-38	39-41	42-44	45-47	48-51	52-55
Size	2	4/6	8/10	12/14	16/18	20/22	24/26	28/30

## HOW TO MEASURE



### BUST

Measure under the arm and around the fullest part of the bust with arms down, keeping tape horizontal.

# SPEC SHEET + MEASUREMENTS

PORT AUTHORITY.

Port Authority® Women's Sweater Fleece Vest. L236

## COLORS

---



Black Heather    Grey Heather  
PMS BLACK    PMS 424C  
C