

# SPEC SHEET + MEASUREMENTS

PORT AUTHORITY.

## Port Authority® Sweater Fleece Vest. F236

### Product photo



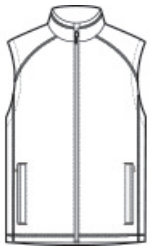
The comfort of a sweater joins the unbeatable warmth of fleece in these modern styles. Contrast binding at the pockets heightens the visual appeal.

- 8.8-ounce, 100% polyester sweater fleece
- Twill-taped neck
- Reverse coil zipper
- Chin guard
- Full-length interior storm flap
- Front reverse coil zippered pockets with binding trim
- Knotted zipper pulls

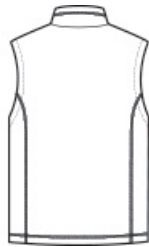
### CARE INSTRUCTIONS

Machine was cold. Gentle cycle with like colors. Non chlorine bleach when needed. Tumble dry low. Remove promptly. Do not iron.

### Sketches



front



back

# SPEC SHEET + MEASUREMENTS

PORT AUTHORITY

Port Authority® Sweater Fleece Vest. F236

## PRODUCT MEASUREMENTS

	XS	S	M	L	XL	2XL	3XL	4XL
Body Length at Back	25 3/4	26 3/4	27 3/4	28 3/4	29 3/4	30 3/4	31 1/4	31 3/4
Chest	18 3/4	20 1/4	21 3/4	23 1/4	24 3/4	26 1/4	28 1/4	30 1/4

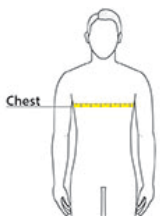
**Body Length at Back:** Measured from high point shoulder to finished hem at back.

**Chest:** Measured across the chest one inch below armhole when laid flat.

## SIZE CHARTS

	XS	S	M	L	XL	2XL	3XL	4XL
Chest	32-34	35-37	38-40	41-43	44-46	47-49	50-53	54-57

## HOW TO MEASURE



### CHEST

Measure under the arm and around the fullest part of the chest with arms down, keeping tape horizontal.

# SPEC SHEET + MEASUREMENTS

PORT AUTHORITY.

Port Authority® Sweater Fleece Vest. F236

## COLORS

---



Black Heather    Grey Heather  
PMS BLACK    PMS 424C  
C