

# SPEC SHEET + MEASUREMENTS

## District® Women's Perfect Tri® 3/4-Sleeve Raglan. DM136L

### Product photo



A classic raglan perfectly created with tri-blend yarns.

- 4.5-ounce (153 GSM)
- 50/25/25 polyester/combed ring spun cotton/rayon, 32 singles
- Tear-away label
- Back neck tape
- 1x1 rib knit neck

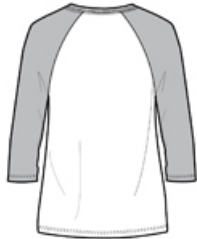
### CARE INSTRUCTIONS

Machine wash cold with like colors. Only non-chlorine bleach when needed. Tumble dry low. Warm iron if necessary.

### Sketches



front



back

# SPEC SHEET + MEASUREMENTS

## District® Women's Perfect Tri® 3/4-Sleeve Raglan. DM136L

### PRODUCT MEASUREMENTS

	XS	S	M	L	XL	XXL	3XL	4XL
Body Length at Back	25 1/2	26	26 1/2	27 1/4	28	28 1/2	29	29
Bust	17 1/4	18 1/4	19 1/4	20 3/4	22 1/4	24 1/4	26 1/4	28 1/4
Sleeve Length	22 1/2	23	23 1/2	24 1/4	25	25 3/4	26 1/2	27 1/4

**Body Length at Back:** Measured from high point shoulder to finished hem at back.

**Bust:** Measured across the chest one inch below armhole when laid flat.

**Sleeve Length:** Start at center of neck and measure down shoulder, down sleeve to hem.

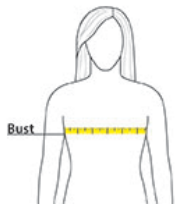
### SIZE CHARTS

	XS	S	M	L	XL	XXL	3XL	4XL
Bust	32-34	35-36	37-38	39-41	42-44	45-47	48-51	52-55
Size	2	4/6	8/10	12/14	16/18	20/22	24/26	28/30

# SPEC SHEET + MEASUREMENTS

District® Women's Perfect Tri® 3/4-Sleeve Raglan.  
DM136L

## HOW TO MEASURE



### BUST

Measure under the arm and around the fullest part of the bust with arms down, keeping tape horizontal.

## COLORS



Black Frost/  
Grey Frost  
PMS 426C



Black/ Black  
Frost  
PMS BLACK  
C



Black/ White  
PMS BLACK  
C



Fuchsia Frost/  
Grey Frost  
PMS 2452C



Grey Frost/  
White  
PMS COOL  
GREY 11C



Navy Frost/  
Grey Frost  
PMS 2379C



Purple Frost/  
Grey Frost  
PMS 668C



Red Frost/  
Grey Frost  
PMS 200C



Royal Frost/  
Grey Frost  
PMS 7684C