

SPEC SHEET + MEASUREMENTS



Carhartt® Tall Midweight Hooded Sweatshirt. CTTK121

Product photo



Sometimes Mother Nature can't make up her mind. This sweatshirt works perfectly as a layer or by itself, allowing you to adapt with the weather.

- 10.5-ounce, 50/50 cotton/poly blend or 59/41 cotton/poly blend (Black, Carbon Heather, Moss, New Navy)*
- 70/30 cotton/poly blend (Heather Grey)
- Attached three-piece hood with drawcord closure
- Front hand warmer pocket
- Stretchable, spandex-reinforced, rib knit cuffs and waistband
- Carhartt-strong, triple-stitched main seams
- Carhartt label sewn on hand warmer pocket
- Loose fit **Please note: Select colors in Carhartt fleece are currently transitioning from a 50/50 cotton/poly blend to a 59/41 cotton/poly blend. Weight and fabric properties remain the same. Your order may contain a combination of both fabrics.*

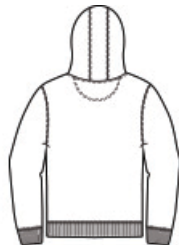
CARE INSTRUCTIONS

Machine Wash Cold Like Colors. Do Not Bleach. Tumble Dry Low.

Sketches



front



back

SPEC SHEET + MEASUREMENTS



Carhartt® Tall Midweight Hooded Sweatshirt. CTTK121

PRODUCT MEASUREMENTS

	LT	XLT	2XLT	3XLT
Body Length at Back	31	32	32	33
Chest	26	28	30	32
Sleeve Length from Center Back	39 3/8	40 1/8	40 7/8	41 3/8

Body Length at Back: Measured from high point shoulder to finished hem at back.

Chest: Measured across the chest one inch below armhole when laid flat.

Sleeve Length from Center Back: Measure from Center Back neck to shoulder point to sleeve hem.

SIZE CHARTS

	LT	XLT	2XLT	3XLT
Chest	42-44	46-48	50-52	54-56

SPEC SHEET + MEASUREMENTS



Carhartt® Tall Midweight Hooded Sweatshirt. CTTK121

HOW TO MEASURE



CHEST

Measure under the arm and around the fullest part of the chest with arms down, keeping tape horizontal.

COLORS



Black
PMS BLACK
C



Carbon
Heather
PMS 7540C



Heather Grey
PMS COOL
GREY 6C



Moss
PMS 7770C



New Navy
PMS 533C