

SPEC SHEET + MEASUREMENTS

PORT AUTHORITY.

Port Authority® Women's Hybrid Soft Shell Jacket. L787

Product photo



Quilted front and back panels join a wind-resistant, water-resistant soft shell to make the Hybrid a trend-right stretch performance jacket with urban edge.

- 100% polyester knit shell bonded to a water-resistant film insert and a 100% polyester microfleece lining
- 100% nylon woven overlays
- 1000MM fabric waterproof rating
- 1000G/M² fabric breathability rating
- Interior storm flap with chin guard
- Reverse coil zippers
- Front zippered pockets
- Port Pocket™ for decoration access
- Binding at cuffs
- Open hem with adjustable locking drawcords

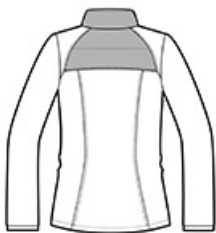
CARE INSTRUCTIONS

Machine wash cold with like colors. Do not bleach or use fabric softener. Tumble dry low. Remove promptly. Do not iron. Do not dry clean.

Sketches



front



back

SPEC SHEET + MEASUREMENTS

PORT AUTHORITY

Port Authority® Women's Hybrid Soft Shell Jacket. L787

PRODUCT MEASUREMENTS

	XS	S	M	L	XL	XXL	3XL	4XL
Size	2	4/6	8/10	12/14	16/18	20/22	24/26	28/30
Bust	18	19	20	21 1/2	23	24 1/2	26 1/2	28 1/2
Body Length at Back	25 3/4	26 1/4	26 3/4	27 1/4	27 3/4	28 1/4	28 3/4	29 1/4
Sleeve Length from Center Back	33	33 1/2	34	34 5/8	35 1/4	35 7/8	36 1/4	36 5/8

Bust: Measured across the chest one inch below armhole when laid flat.

Body Length at Back: Measured from high point shoulder to finished hem at back.

Sleeve Length from Center Back: Measure from Center Back neck to shoulder point to sleeve hem.

SIZE CHARTS

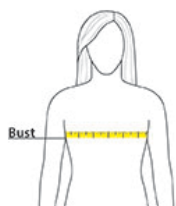
	XS	S	M	L	XL	XXL	3XL	4XL
Size	2	4/6	8/10	12/14	16/18	20/22	24/26	28/30
Bust	32-34	35-36	37-38	39-41	42-44	45-47	48-51	52-55

SPEC SHEET + MEASUREMENTS

PORT AUTHORITY.

Port Authority® Women's Hybrid Soft Shell Jacket. L787

HOW TO MEASURE



BUST

Measure under the arm and around the fullest part of the bust with arms down, keeping tape horizontal.

COLORS



Deep Black
PMS BLACK
C



Smoke Grey/
Grey Steel
PMS Cool
Grey 11 C