



A versatile full-zip hooded sweatshirt in our core weight.

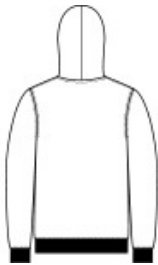
- 7.8-ounce, 50/50 cotton/poly fleece
- Air jet yarn for softness
- Self-fabric hood lining
- Dyed-to-match draw cords
- YKK metal zipper
- Front pockets

CARE INSTRUCTIONS

Machine wash cold, inside out with like colors. Only non-chlorine bleach, when needed. Tumble dry low. Do not iron.

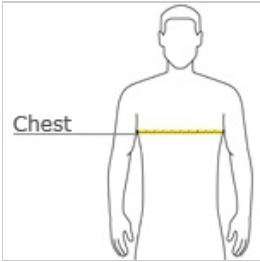


front



back

HOW TO MEASURE



CHEST WIDTH

Measure under the arm and around the fullest part of the chest with arms down, keeping tape horizontal.

SIZE CHART

	S	M	L	XL	2XL	3XL	4XL	5XL	6XL
Chest	35-37	38-40	41-43	44-46	47-49	50-53	54-57	58-60	61-63

COLOR INFORMATION

Please note: PMS code information is shown only when an exact match is available.

 Ash PMS COOL GRAY 3C	 Athletic Heather PMS COOL GRAY 7C	 Black Heather	 Carolina Blue PMS 7682C	 Charcoal PMS COOL GRAY 11C	 Coyote Brown	 Dark Chocolate Brown PMS 412C	 Dark Green PMS 560C	 Dark Heather Grey PMS 7540C	 Graphite Heather	 Heather Navy PMS 2379C
 Heather Red PMS 703C	 Heather Royal PMS 7684C	 Jet Black PMS BLACK C	 Kelly PMS 340C	 Lime PMS 367C	 Maroon PMS 490C	 Navy PMS 2380C	 Neon Blue PMS 801C	 Neon Green PMS 902C	 Neon Orange PMS 811C	 Neon Pink PMS 926C
 Neon Yellow	 Olive Drab Green	 Orange PMS 172C	 Purple PMS 7672C	 Red PMS 200C	 Royal PMS 2133C	 Sangria PMS 2046C	 Steel Blue	 True Royal	 White	