

SPEC SHEET + MEASUREMENTS

PORT AUTHORITY.

Port Authority® C-FREE® Double Knit 1/4-Zip Vest. K880V

Product photo



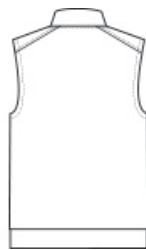
Created with an earth-first attitude, this midweight 1/4-zip vest will stand out in any work or leisure wardrobe. Not only is it easy-to-wear and layerable, but it also boasts superior stretch, snag-resistance, moisture-wicking and UV ray-resistant performance.

- 7.7-ounce, 89% recycled polyester/11% spandex interlock knit
- 7.7-ounce, 81% recycled polyester/8% polyester/11% spandex interlock knit (Grey Steel Heather)
- This product's carbon footprint has been measured and reduced through a combination of preferred materials and investing in carbon offset projects through the ClimeCo Certified Product™ Program
- Snag-resistant
- Moisture-wicking
- UPF rating of 50+
- Self-piped zipper placket
- Dyed-to-match, recycled, reverse coil zipper with silicone-tipped drawcord pull
- Self-fabric faced armholes
- Self-banded hem
- Tag-free label

Sketches



front



back

A C-FREE® Product

We start by reducing the product's impact by switching to at least 50% preferred materials. We then measure and reduce the total carbon footprint of each product in the C-FREE program—from cradle-to-grave—through the ClimeCo Certified Product™ Program. This certification purchases third-party, verified carbon offsets through ClimeCo.

SPEC SHEET + MEASUREMENTS

PORT AUTHORITY

Port Authority® C-FREE® Double Knit 1/4-Zip Vest. K880V

Care Instructions Machine Wash Cold With Like Colors. Do Not Use Fabric Softener. Only Non-Chlorine Bleach, When Needed. Tumble Dry Low. Remove Promptly. Cool Iron, If Necessary.

PRODUCT MEASUREMENTS

	XS	S	M	L	XL	2XL	3XL	4XL
Body Length at Back	25 1/2	26 1/2	27 1/2	28 1/2	29 1/2	30 1/2	31	31 1/2
Chest	18 1/2	20	21 1/2	23	24 1/2	26	28	30

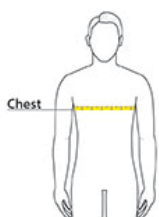
Body Length at Back: Measured from high point shoulder to finished hem at back.

Chest: Measured across the chest one inch below armhole when laid flat.

SIZE CHARTS

	XS	S	M	L	XL	2XL	3XL	4XL
Chest	32-34	35-37	38-40	41-43	44-46	47-49	50-53	54-57

HOW TO MEASURE



CHEST

Measure under the arm and around the fullest part of the chest with arms down, keeping tape horizontal.

SPEC SHEET + MEASUREMENTS

PORT AUTHORITY.

Port Authority® C-FREE® Double Knit 1/4-Zip Vest. K880V

COLORS



Deep Black
PMS BLACK
C



Grey Steel
Heather
PMS 4287C



True Navy
PMS 533C



White
PMS WHITE
C